

# THERMAL IMAGING

TECHNOLOGY EXPLAINED



## THERMAL IMAGING TECHNOLOGY

Our thermal solutions are the key to protecting assets and avoiding dangerous situations, by allowing you to see the unknown. With thermal images, threats can be detected early.

**SEE THE INVISIBLE**



## HOW THERMAL IMAGING TECHNOLOGY WORKS

Thermal imaging is a non-contact technology that makes the thermal radiation of an object or body visible.



Display of temperature differences from

**0.1°C**

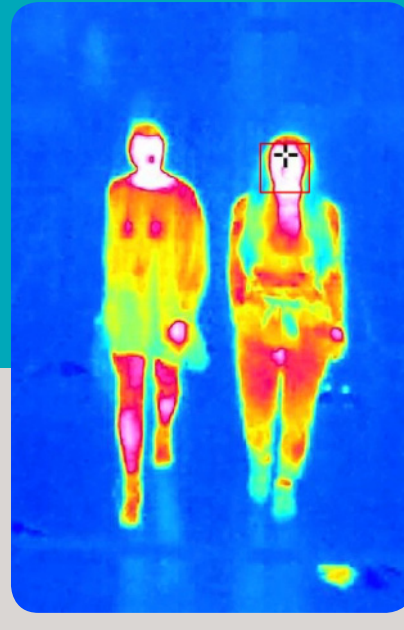
Temperature range from

**-40 to 550°C**



## THERMAL RADIOMETRY (TR) FOR TEMPERATURE MEASUREMENT

Thermal radiometry can measure thermal radiation in the entire image area and assign a temperature value per pixel, across 22 independent areas of the screen



## TYPICAL APPLICATIONS FOR THERMAL IMAGING

- Perimeter protection
- Indoor and Outdoor Fire protection
- Plant protection and safety in Industrial & Manufacturing facilities
- Public transportation
- Machine and equipment monitoring
- Food industry and logistics
- Production, storage and transport of dangerous goods
- Borders and other controlled areas



## THERMAL OVERLAY

Thermal overlay is the placement of the thermal image on the optical sensor image, combined with high-contrast visual details, to display sharp images with clear details that are otherwise not visible on thermal images. Providing a unique insight to predictive maintenance issues



## HIGH DURABILITY

Our Intelligent Video Solutions are extremely robust and durable systems and can be used in extreme environments



## EXTREMELY LOW ENERGY CONSUMPTION

Only <10 watts of power

**<10w**



Outside temperatures of

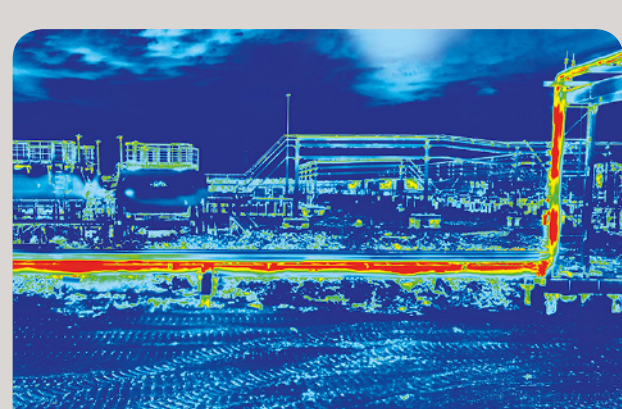
**-40 to +60°C**



## PROVEN EXPERTISE

Our intelligent video solutions hardware is manufactured by a German-based pioneering global company that has been developing and installing video-based solutions since 2000.

Part of the Konica Minolta Group of Companies, Mobotix is renowned for its uncompromisingly reliable, intelligent solutions that can be expanded almost without limits and which ensure long-term investment security for their clients.



### LET'S TALK

Contact us to find out how our Intelligent Video Solutions can support, protect and optimise your business today and in the future:

intelligentvideo@konicaminolta.co.uk  
www.konicaminolta.co.uk/intelligent-video  
0800 833 864

Konica Minolta Business Solutions, Miles Gray Road, Basildon, Essex, SS14 3AR  
info@konicaminolta.co.uk | www.konicaminolta.co.uk | 0800 833864