



KONICA MINOLTA



INTELLIGENT VIDEO SOLUTIONS

EFFECTIVE MONITORING & PROTECTION

PROTECT PEOPLE, FACILITIES & INFRASTRUCTURE
WITHIN **TRANSPORT & LOGISTICS**



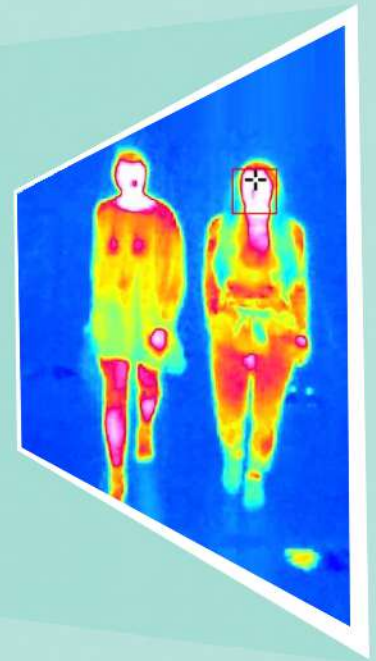
Contact us to find out how we can support,
protect and optimise your business today and in the future:
intelligentvideo@konicaminolta.co.uk
www.konicaminolta.co.uk/intelligent-video



KONICA MINOLTA

MONITORING & PROTECTION

FOR TRANSPORT & LOGISTICS



INTELLIGENCE THROUGH OPTICS & DATA

PROTECT PEOPLE, FACILITIES & INFRASTRUCTURE

More than ever, operators of public and private transportation services and commercial transport vehicles must take action to protect and ensure the safety of their staff, passengers, cargo and vehicles.

Our Intelligent Video Solutions are highly durable, IoT-enabled devices delivering exceptional image quality and data analysis. The innovative decentralised concept allows you to protect larger areas using fewer cameras.

Our solutions combine visual, thermal, sound and sensor data to better protect your people, facilities, and infrastructure. With secure video surveillance, situation analysis and access control, we provide a range of cost-effective solutions.

Our Intelligent Video Solutions will:

- Protect facilities, people and assets from threats
- Provide access control with person identification
- Monitor operations & high risk areas remotely
- Offer situation analysis through object counting, heat mapping and behavioural detection
- Ensure reliability & detect danger
- Help reduce operational costs
- Sensitivity: 0.05C per pixel

THERMAL DETECTION

PROVIDE A SAFER ENVIRONMENT FOR STAFF
During unprecedented times, protecting employees and customers is vital to any organisation. Our Intelligent Video Solutions with visual and thermal radiometry can be configured to detect an elevated body temperature.

The thermal sensor can be used in any facility, premises or public environment to:

- Identify elevated body temperature of any person entering a site.
- Raise a warning to the effected person and notify personnel to act immediately
- Reduce the potential spread of infection
- Protect employees and customers
- Help defend the organisation against threats

Studies have shown that there is a clear correlation between internal core body temperature and the temperature of the skin. This is what our solutions are able to detect. As an individual passes the view of the camera, their thermal image is analysed and any temperature exceeding a threshold is identified.

Our Intelligent Video Solutions remove the requirement for human intervention, they can be quickly deployed, installed and set-up remotely (subject to network connection), giving you, your employees and business the protection you need.