

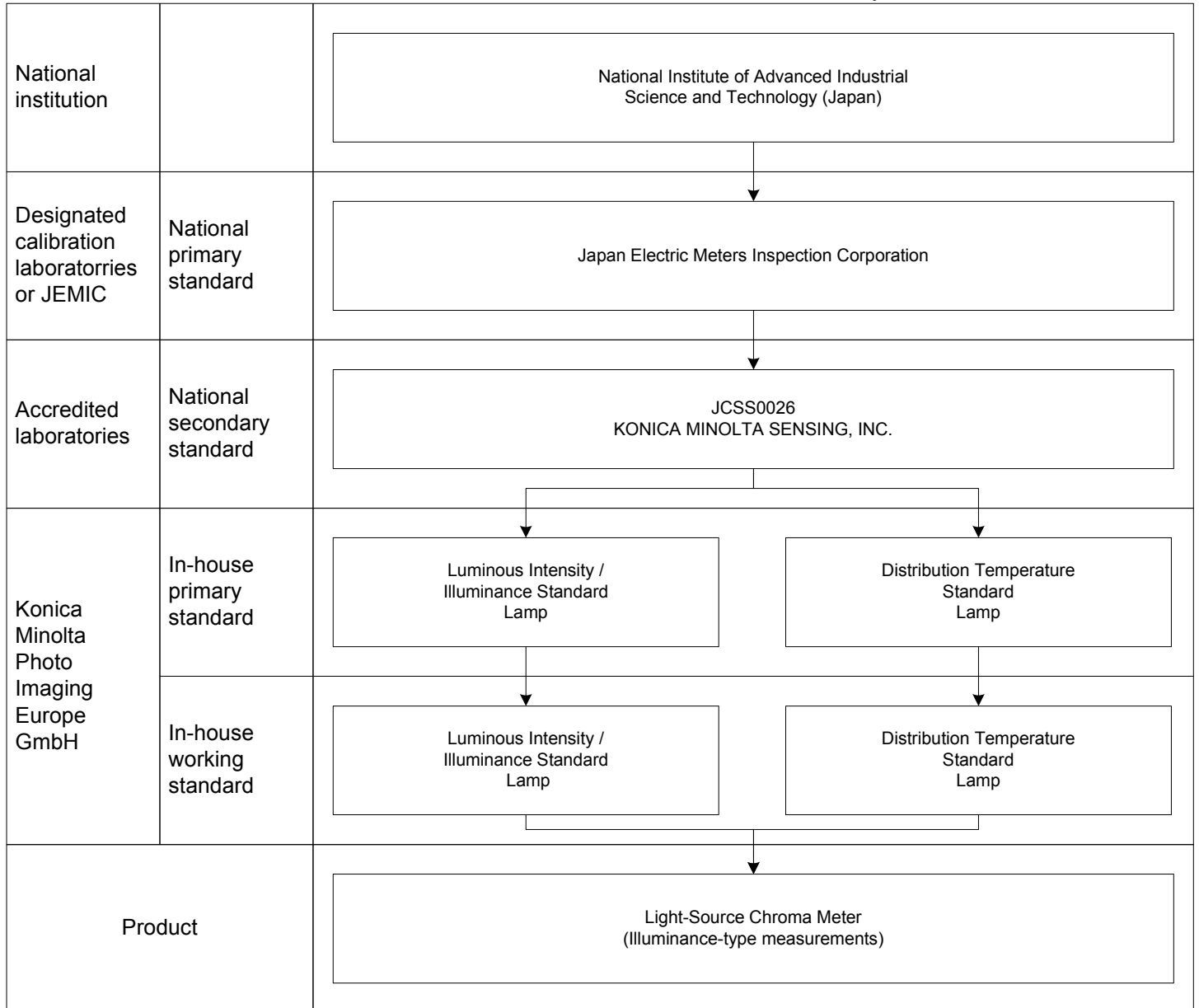


KONICA MINOLTA

Traceability System for Light Source Chroma Meter (Illuminance-type measurement)

January, 2004

Konica Minolta Photo Imaging Europe GmbH
Instrument Systems Division



Interval between calibration:

Primary Standard Luminous Intensity / Illuminance Standard Lamp: 5 years or 30 hours of accumulated use

Working Standard Luminous Intensity / Illuminance Standard Lamp: 1 year or 30 hours of accumulated use

Primary Standard Distribution Temperature Standard Lamp: 5 years or 30 hours of accumulated use

Working Standard Distribution Temperature Standard Lamp: 1 year or 30 hours of accumulated use

JCSS0026: Japan Calibration Service System, the calibration laboratory accreditation system in Japan.

The organization number for KONICA MINOLTA SENSING, INC. is 0026